

ARAPAHOE BASIN IS SAVING:
 A MINIMUM OF 162.3 TONS CARBON DIOXIDE EMISSIONS/GREENHOUSE GASSES/GLOBAL WARMING ANNUALLY
 AVOIDED WITH ALL THEIR RECYCLING EFFORTS COMBINED!

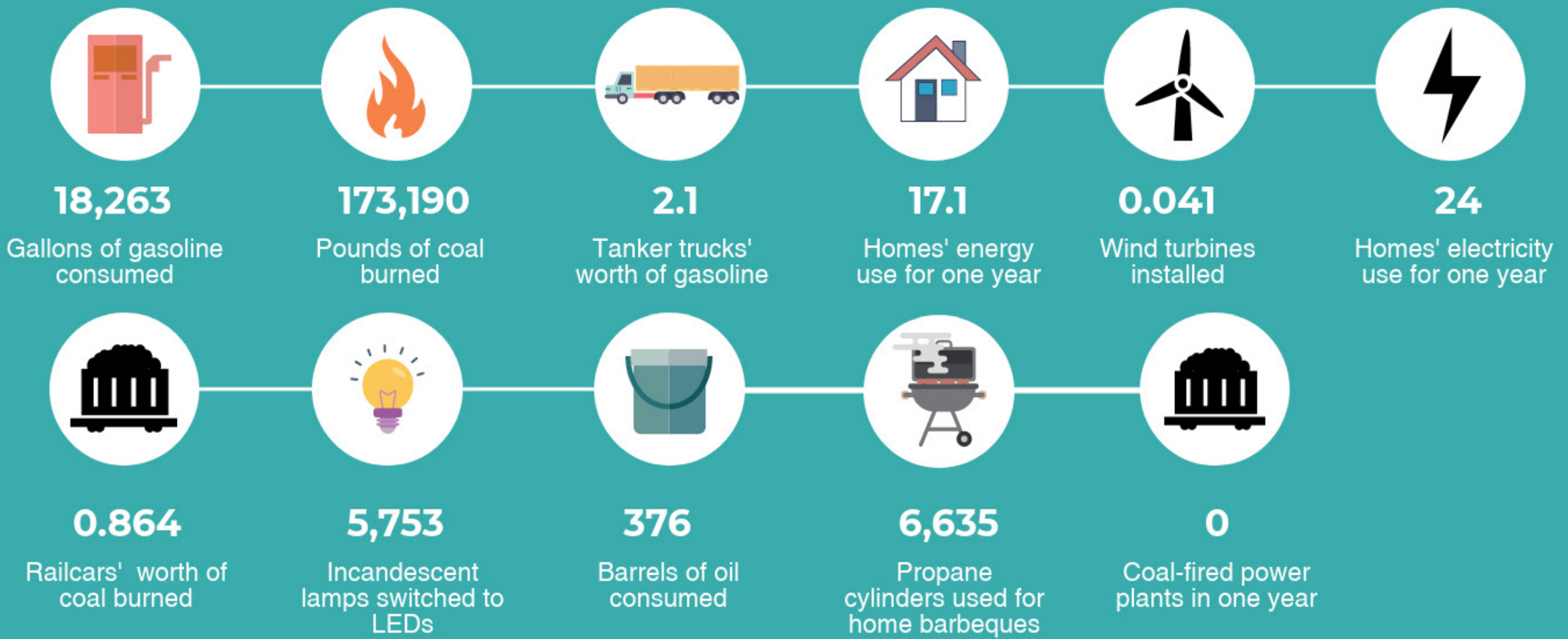
THIS EQUIVALENCY CALCULATION IS BASED ON ALL THEIR RECYCLING TONNAGE = MINIMUM 45.10 TONS COMBINED ANNUALLY!

This below would be equivalent to avoiding:

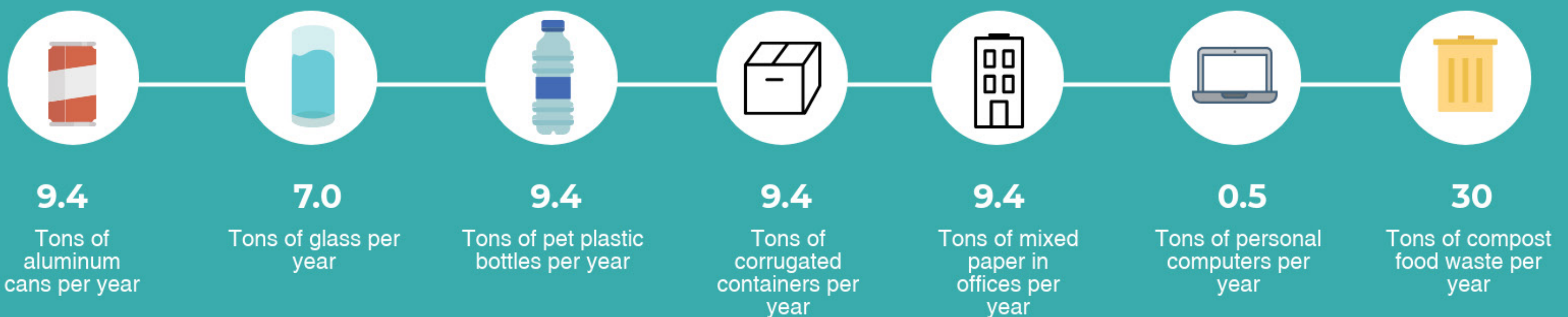
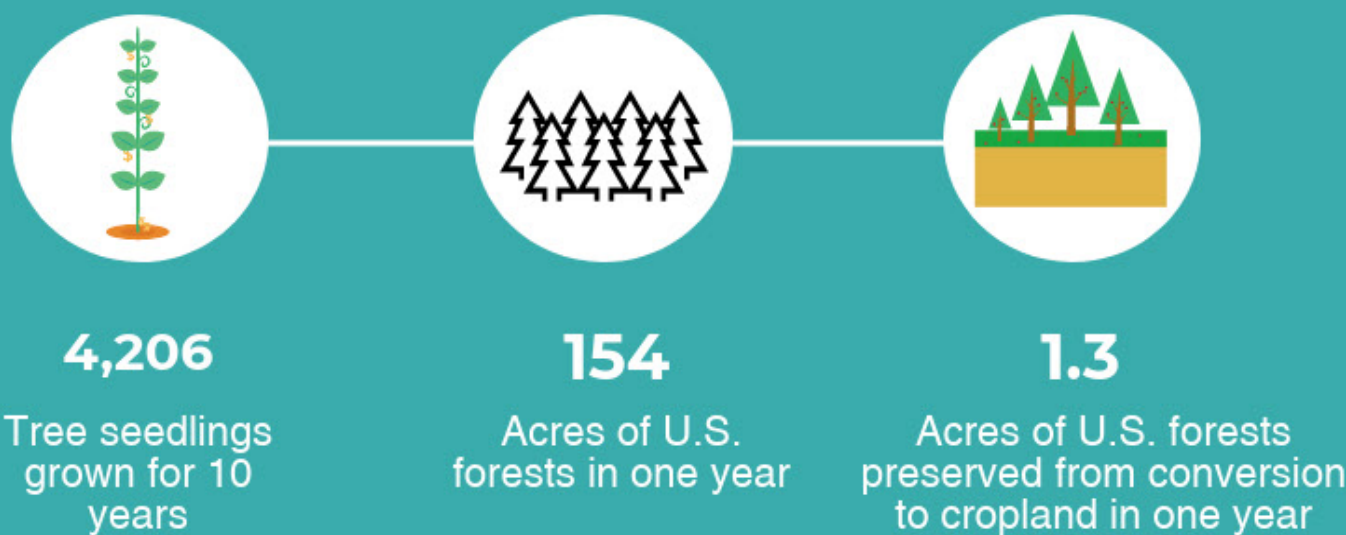
Greenhouse Gas Emissions From



CO2 Emissions From



Carbon sequestered by



(A PORTION OF RECYCLAHOLICS PROCEEDS GO BACK ROUND TO EARTH, ANIMAL & SOCIAL JUSTICE ORGANIZATIONS. FOR A LIST OF SOME OF THE ORGANIZATIONS SUPPORTED PLEASE GO TO: RECYCLAHOLICS.COM/MAKE_A_DIFFERENCE)

"ALWAYS PARTNER FOR CHANGE."
 -HORST M. RECHELBACHER

= MINIMUM 45.10 TONS COMBINED ANNUALLY!
 LANDFILL DIVERSION RATE APPROX. 50%